



FOX MARQUETTE SUBARU LAKE SUPERIOR PERFORMANCE RALLY

PRESENTED BY
TRAVEL MARQUETTE

2025
OCTOBER
16-18



TRAVEL
MARQUETTE



FOX

MARQUETTE
SUBARU



U.S. AIR FORCE

krist

The Finnish
**LONG
DRINK**
Legend of 1952

RALLY FORWARD



incrediblebank
incrediblebank.com • Member FDIC


LONGYEAR

 DOUBLE
TROUBLE

GZB RALLY TEAM
ARVON MEDIA

WEEKEND SCHEDULE

THURSDAY, OCTOBER 16TH

7-9 PM	Parc Expose	Fox Marquette Subaru
--------	-------------	----------------------

FRIDAY, OCTOBER 17TH

1:05 PM	Service #1	Sidnaw Service Area
---------	------------	---------------------

1:25 PM	The Long Drink Spectator Area, Pass 1	Markey Lake
---------	---------------------------------------	-------------

2:00 PM	Incredible Bank Spectator Area, Pass 1	Far Point
---------	--	-----------

2:25 PM	Longyear Spectator Area, Pass 1	Teepee Tower
---------	---------------------------------	--------------

4:02 PM	Service #2	Sidnaw Service Area
---------	------------	---------------------

4:20 PM	The Long Drink Spectator Area, Pass 2	Markey Lake
---------	---------------------------------------	-------------

5:28 PM	Incredible Bank Spectator Area, Pass 2	Far Point
---------	--	-----------

5:53 PM	Longyear Spectator Area, Pass 2	Teepee Tower
---------	---------------------------------	--------------

SATURDAY, OCTOBER 18TH

9-10 AM	Parc Expose	Ishpeming Armory
---------	-------------	------------------

10:50 AM	Double Trouble Spectator Area, Pass 1	Two Mile Creek
----------	---------------------------------------	----------------

11:28 AM	Ore Dock Spectator Area, Pass 1	Flat Rock
----------	---------------------------------	-----------

1:30 PM	Service #3	Westwood Schools
---------	------------	------------------

2:32 PM	Double Trouble Spectator Area, Pass 2	Two Mile Creek
---------	---------------------------------------	----------------

3:10 PM	Ore Dock Spectator Area, Pass 2	Flat Rock
---------	---------------------------------	-----------

4:10 PM	Regional Competitor Refuel	Westwood Schools
---------	----------------------------	------------------

4:42 PM	National Competitor Refuel	Westwood Schools
---------	----------------------------	------------------

4:53 PM	Krist Oil Spectator Area	Mt. Marquette
---------	--------------------------	---------------

6:00 PM	Podium Ceremony	Downtown Marquette
---------	-----------------	--------------------

7:00 PM	Awards Party presented by Rally Forward	Downtown Marquette
---------	---	--------------------

The Organizers, Workers, Competitors, and Crews welcome you to the 2025 running of the Lake Superior Performance Rally. This event is held under the General Competition Rules of the American Rally Association (ARA).

LSPR continues to build on our tradition of an exciting and safe event, with even more emphasis on safety for you, the spectator. You will be closer to rally cars (operating at high speeds) than in any other form of motor sports. The job of the Spectator Marshals is to let you enjoy LSPR while maintaining your safety as best as possible - and the safety of the competitors, crews, and other workers.

We urge everyone to view LSPR only from the designated spectator points. These areas have been selected because they provide exciting views, and are also safer than other areas. Any other out-of-the-way viewing area may not be safe. Rally officials will perform a safety check on each stage before allowing competitors on that section of road. If they are not satisfied with the

safety of your location, you will be required to move, or the stage may be cancelled.

You will not be able to spectate every stage. You must choose where you wish to go, and allow ample transit time to get to the spectator area. If you are short on time, we suggest skipping ahead to the next spectator point.

Parking can be tricky on the forest's narrow roads. Please go down as far as you can, turn around and park on the right side of the road. Leave the entire left side of the road open for safety vehicles. Lastly, please respect the Spectator Marshals. They volunteer to work very long hours to help ensure your safety and viewing enjoyment.



CHARLIE DISCOE

WELCOME

SPECTATOR SAFETY

Stage Rally is often called the most exciting and demanding motorsport. It is also one of the most difficult for the spectator to get to and watch. While the LSPR spectator areas are not in your backyard, you can be assured of seeing real rally action... not something staged in a parking lot, industrial park, or arena.

Safety at these spectator points is our most important concern, especially with the large crowds expected again this year. Whether you will be heading out to view your first stage rally or you are a grizzled veteran, here are some simple rules to help ensure you enjoy the event as safely as possible.

Please follow directions for the Spectator Marshals at all Spectator Areas. While spectating is free at all areas, and people can come and go as they please, we do have control over these areas. Our marshals have been trained to recognize potentially hazardous areas, and are directed to keep people out of them for their own safety.

Plan your spectating. The time for each spectator area, as well as directions on how to get there, are included in this spectator guide. Get there early, as likely it will be a bit of a walk from your parking spot to the spectator viewing area. Pick your vantage point carefully, while staying behind the yellow tape. High on a hill or behind a tree line is best. The worst place to stand is in a ditch or on the outside of a corner. Rally drivers use the whole road - and sometimes more than the whole road - in order to gain a competitive advantage. Again, listen to the marshals, they know where to stand. You must remain behind the yellow banner tape at all times, and never behind the red tape.

Be wary and alert at all times! Some cars are not as loud as others. At night you have the benefit of headlights warning you cars are on the way, in the daytime you may not know until it is too late. Co-drivers will be looking down at their notes, and often do not see hazards in the road. Drivers are so focused on listening and following the notes they often say they are able to pass a spectator area with hundreds of people and not even notice. Never assume competitors can see you.

Flash photography can be dangerous for a rally driver. Remember to point your camera at the approaching car, but do not start taking photos until they are along side of you to avoid blinding the competitors.

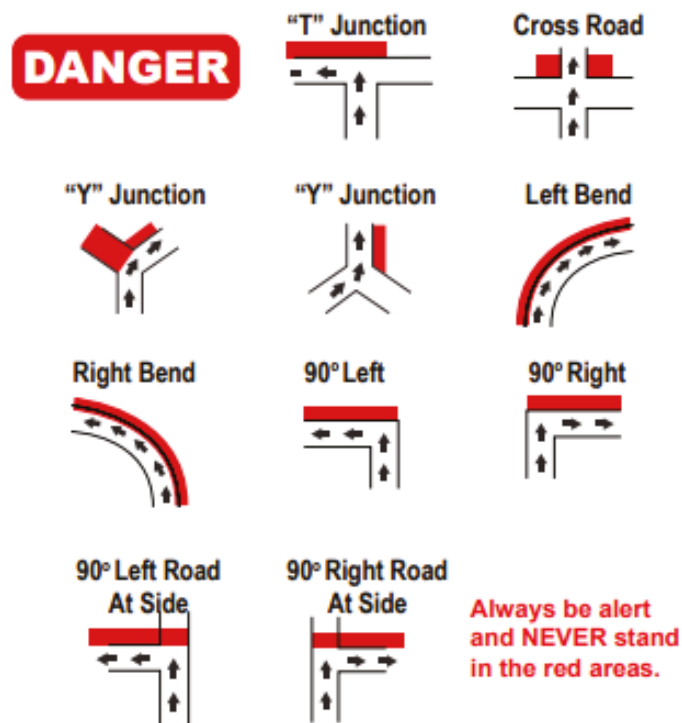
There will be lead cars that enter the stage before competitors to make sure the stage is set up for competition, and that all spectators are in an acceptable location. If you are asked by any of these cars to move, please do so. They also let the cars behind them know to make sure no one has moved back into a position they were asked to leave.

After all the competitors are on stage, several sweep vehicles will follow to make sure all cars complete the stage, and to help any that did not finish. After the sweep trucks come through, they will be followed by a vehicle with a green light on top - the stage is considered hot until Green Light has passed, and no one should enter or cross the stage before that.

Stages can be cancelled if it is deemed that spectators are making it unsafe for competitors, please don't be the reason a stage is cancelled. Follow directions from marshals and lead cars.

CORNER MECHANICS

The areas pictured in red on the right are extremely dangerous places to be standing while a stage is hot. At posted spectator locations marshals will have these areas marked with red tape, and will ensure no one enters them. Please stay behind the yellow tape at a spectator area. If you are in a location with no marshal area present, please refrain from standing in these areas. Lead cars can and will cancel a stage if spectators are observed standing in a location they deem unsafe. Drivers can and will leave the road with no notice, and these areas are places where it is more likely to happen. Be alert at all times, however, as no spot is truly a “safe” spot to stand due to the unpredictable nature of rally.



In a stage rally, competitors are started at intervals - the first few cars typically two minutes apart, and then one minute apart for the rest of the pack, with the fastest cars starting first. The starting order is based on the drivers “seeding”, which reflects their previous performances. To ensure that you see the top drivers in action, you should make sure that you arrive at your spectator spot early. While the early drivers will be fastest, they may not appear so as they usually are very smooth. It’s not until you see some of the later drivers struggling to get around the corners at a lower speed that you will really appreciate the skill of all the competitors.

 MARQUETTE, MICHIGAN

On YOUR MARQ



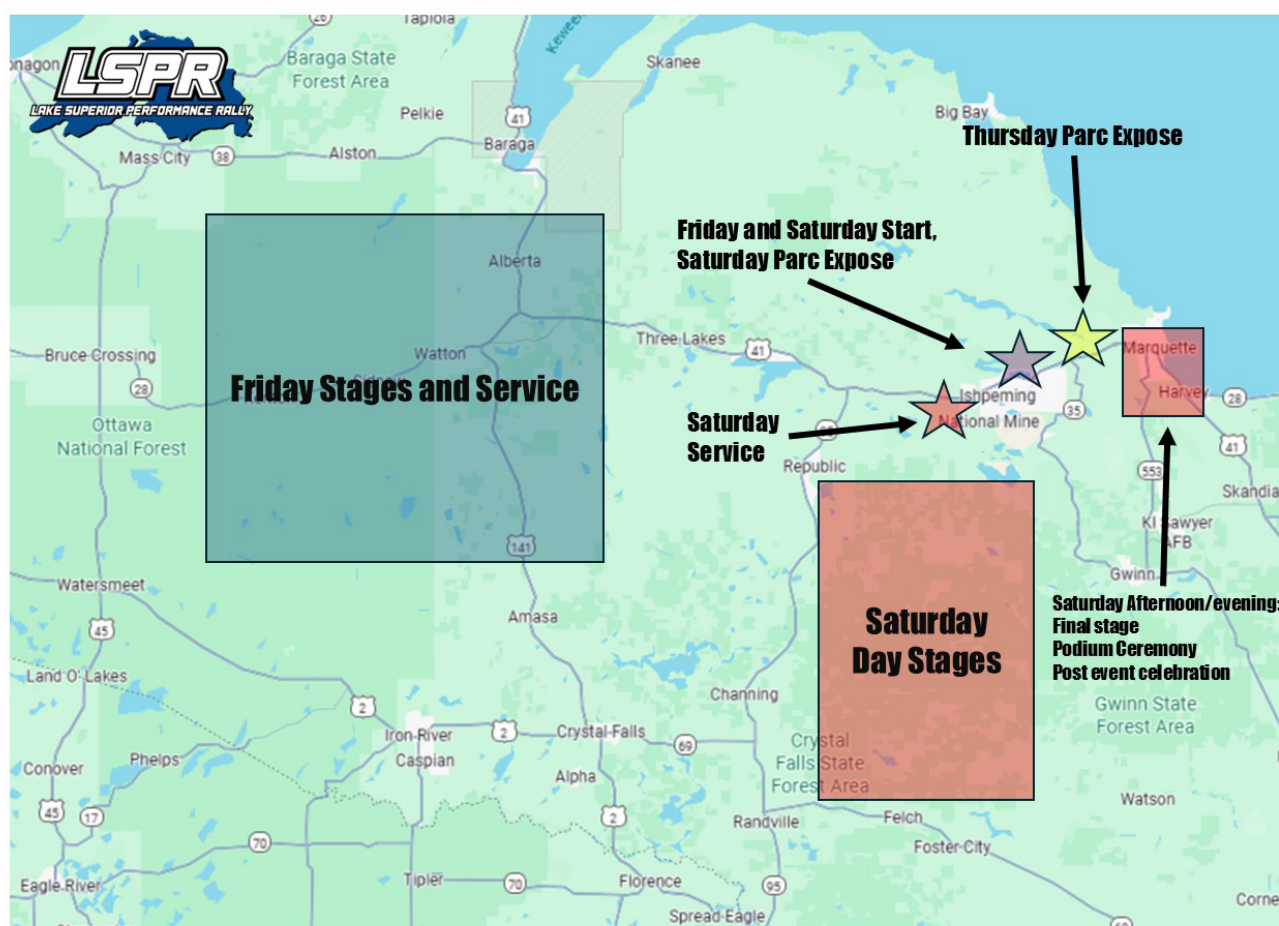
TRAVEL
MARQUETTE

TRAVELMARQUETTE.COM

AREA MAP

Although we don't publish the stage layouts publically, this map will gives a general area of where the different parts of the event will be happening over the course of the weekend.

Please refer the pages later in this guide for times and driving directions to spectator areas, service, Parc Expose, and the podium ceremony and awards party.



Key

- Thursday**
- Friday**
- Saturday**
- Friday and Saturday**



THURSDAY PARC EXPOSE

Our first Parc Expose of the weekend will take place at Fox Marquette Subaru on Thursday October 16th from 7-9PM.

All of the cars entered will be on display, and the competitors will be there as well. There will also be food vendors, sponsors and more to interact with at the family friendly kickoff to the weekend.



FOX MARQUETTE SUBARU

In addition to hosting Parc Expose, the Official Start, and Scrutineering. Fox Marquette Subaru is back for the fifth year as the title sponsor of LSPR. This event as it exists today wouldn't be possible without their support!

GETTING THERE

Spectators are to park at Fox Marquette Ford and walk over to the Subaru dealership next door. The Subaru parking lot will be closed off to non-competitor traffic.

Fox Marquette Ford is located at:
[3815 US HWY 41, Marquette](https://www.foxmarquetteford.com/)



We don't do rain checks.



The 2025 Subaru WRX tS. Born of the storied Subaru rally tradition, with 271 horsepower, electronically adaptive dampers, Drive Mode Select, and gold-finish race-bred Brembo® front and rear brakes. **It's the rally legend for the next generation.**



FOX | MARQUETTE SUBARU

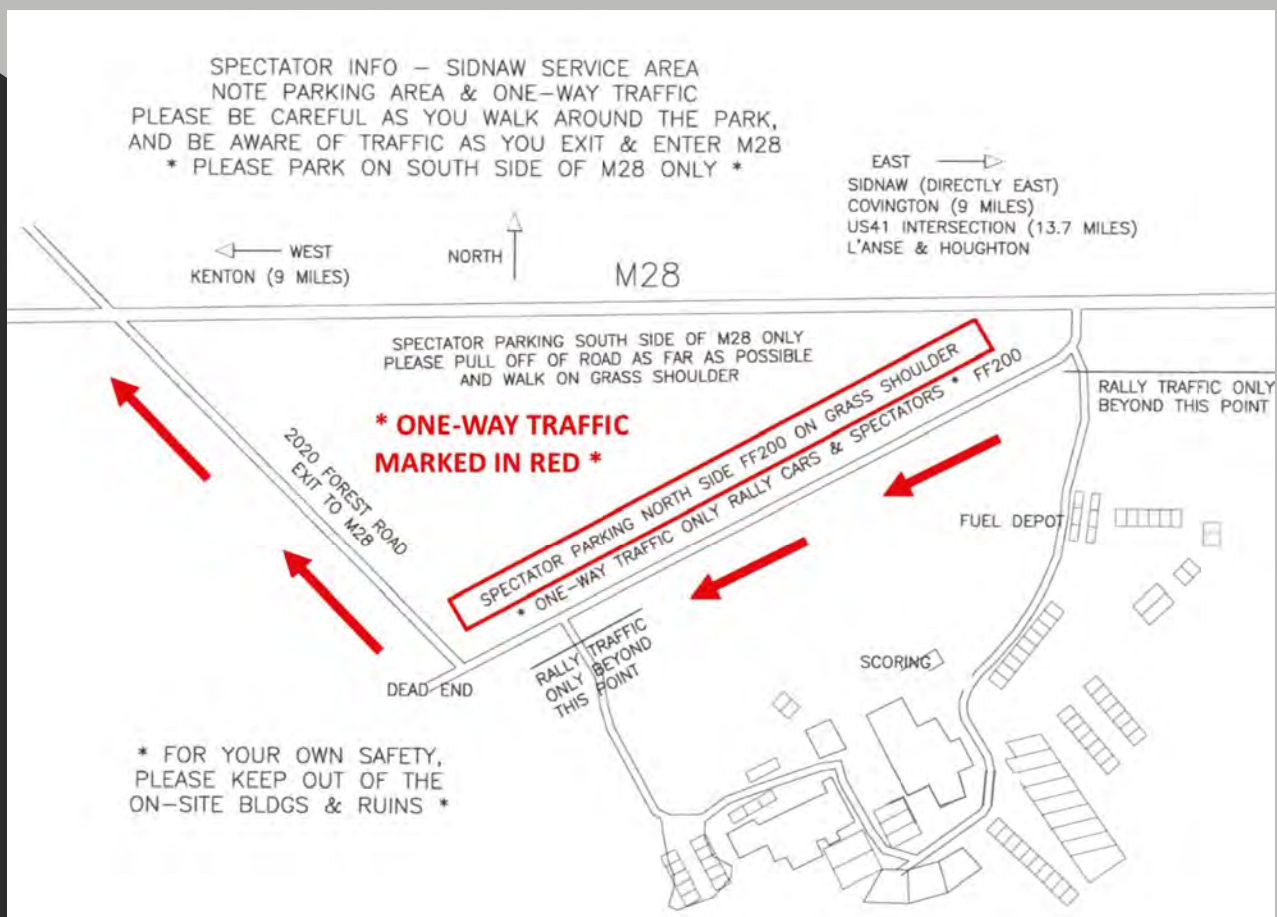
3825 US 41 W, Marquette, MI 49855 • (906) 226-1600 • FoxSubaruMarquette.com

FRIDAY SERVICE

At 1:05 on Friday, the competitors will be coming to the service area for the first scheduled service of the weekend. They will be returning for a second time at 4:00 before the final loop of the evening. Cars will be coming in intervals, like they do on stage, and not all at once. This is a great opportunity to see the crew in action, and get close to the cars to see how they are fairing on the stages.

Spectators are welcome in the service park, but must pay attention to the flow of traffic, and park only in the designated spectator parking area. Spectator parking is along the North shoulder of FF200. Realize that this is a working area, and be aware of your surroundings at all times. The Service area is right off of M28, just west of downtown Sidnaw.

[LSPR Sidnaw Service Area](#)





**POWER, PERFORMANCE AND
GREAT SAVINGS FOR  FANS!**



\$0 DOWN **2.99%** A.P.R. FOR UP TO **36 MONTHS***

AND

SAVE UP TO **\$500** ON SELECT EQUIPMENT*

Learn more at ARAKubotaDiscount.com

© Kubota Tractor Corporation, 2025. \$0 Down, 2.99% A.P.R. financing for up to 48 months. Customer instant rebates of \$300 are available on purchases of new Kubota RTV-XG850 series equipment from participating dealers' in-stock inventory. Promotional rate available to qualified purchasers through Kubota Credit Corporation, U.S.A.; subject to credit approval. Example: 48 monthly payments of \$22.13 per \$1,000 financed. \$300 rebate is not available with 0% APR or other promotional financing. Offers expire 9/30/25. Terms subject to change. For complete warranty, disclaimer, safety, incentive offer and product information, consult your Dealer or KubotaUSA.com. Your Kubota Limited warranty gives you specific legal rights. You may have other rights which vary from state to state. 2 years limited warranty or 1000 hours (whichever occurs first). Kubota Tractor Corporation does not authorize any person to create for KTC any obligation or liability other than that stated in the limited warranty.

SPECTATING GUIDELINES

Follow the route given in the guide to get to the spectator areas, as they avoid stage roads. Do not trust your GPS to get you correctly to the spectator areas.

Spectating is only allowed at designated spectator areas.

Leave plenty of time to get to and from spectator locations, and make sure you have vehicle capable of traveling on logging and forest roads.

Listen to the marshals at all times, they are there for your protection

You must stay behind the yellow tape (yellow areas on map), never red tape.

Competitors will follow the yellow line and arrow direction.

When you reach the other parked cars, turn your car around and park on the right side of the road, facing away from the spectator area and leaving enough room for emergency vehicles.

Obey the speed limit and drive responsibly while traveling to spectator areas. Local Residents will appreciate it.

Take your trash out of the forest with you. Always leave the area cleaner than you found it.

Do not block driveways or access roads.



DAVID FREEBORG

FRIDAY SPECTATING

The Finnish **LONG DRINK** *Legend of 1952*

The Long Drink Spectator Area 1

[Markey Lake]

Stage 2 First car 1:25

Stage 5 First Car 4:20

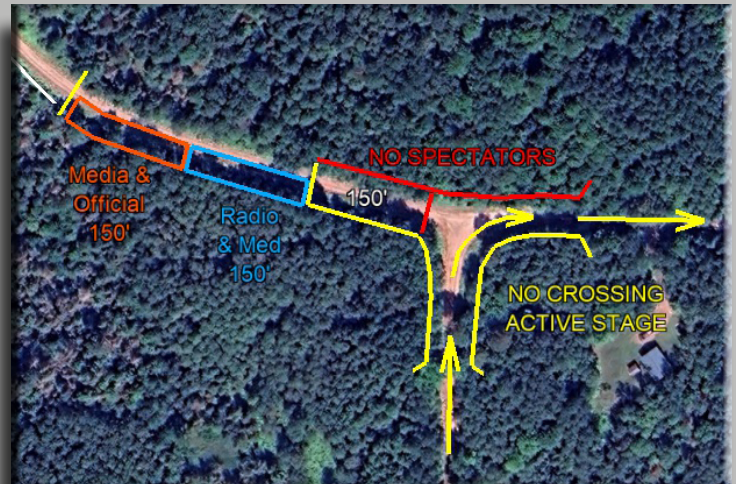
Directions from M-28 and FH 16 N in Kenton

Approximately 17 minutes

Head North on FH 16 for 4.5 Miles.

Turn right (East) on Conners Tower Rd / Skogland Road (not great signage).

Continue on that road until you reach spectator area, approx 5.3 miles.



Click image to view enlarged

FINLAND'S BEST KEPT SECRET.

SPARKLING REFRESHMENT.
REAL LIQUOR.



5.5% ALC/VOL. GIN WITH NATURAL FLAVORS ©2025 THE LONG DRINK COMPANY, CARMEL, IN. ENJOY RESPONSIBLY.

FRIDAY SPECTATING

incrediblebankSM
incrediblebank.com ■ Member FDIC

Incredible Bank Spectator Area 2

[Far Point]

Stage 3 First car 2:00

Stage 7 First Car 5:28

[Directions from M-28 and FH 16 N in Kenton](#)

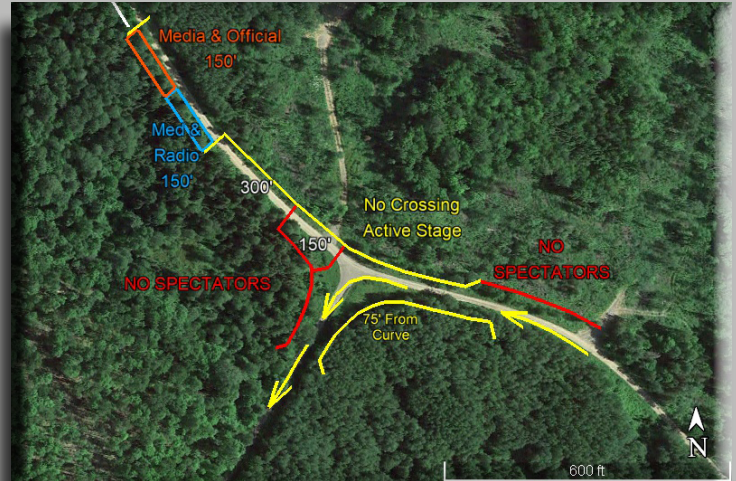
Approximately 15 minutes

Head west on M28 for 6 miles

Turn left (South) on Mill Pond Rd in Trout Creek

Travel 2.1 miles (continue left and becomes USFS 4500)

Follow USFS 4500 for 2.4 miles to spectator area



Click image to view enlarged



Settle for
nothing
less than
incredible.

1101 North Third Street
Marquette, MI 49855

1140 West Washington St.
Marquette, MI 49855

incrediblebankSM
incrediblebank.com ■ Member FDIC

FRIDAY SPECTATING



Longyear Spectator Area 3

[Teepee Tower]

Stage 4 First car 2:25

Stage 8 First Car 5:53

[Directions from M-28 and FH 16 N in Kenton](#)

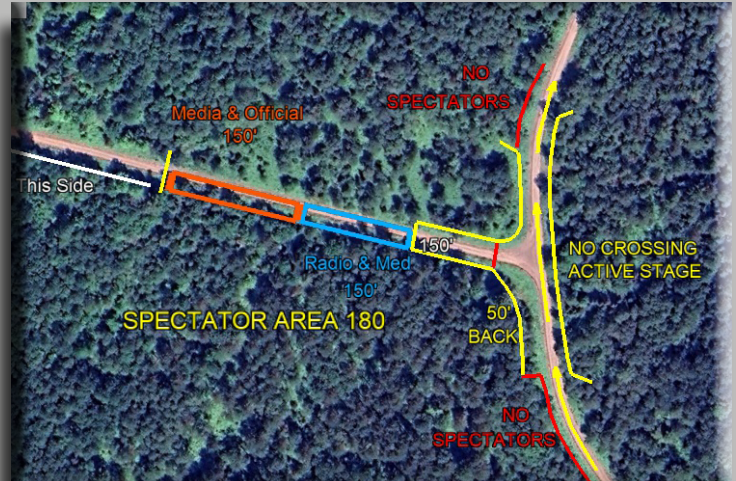
Approximately 19 minutes

Head West on M28 for .2 miles

Turn left (South) on NF16, continue for 2.6 miles

Turn left (East) on Lake on 3 Rd

Follow Lake on 3 Rd for 6.3 miles to spectator area



[Click image to view enlarged](#)



SATURDAY PARC EXPOSE

From 9:00-10:00 AM on Saturday, there will be a Parc Expose in Ishpeming, at the Ishpeming Armory. All of the competitors will be there, and spectators will be able to see the cars, as well as interact with competitors. At 10:00 the teams will begin leaving the Armory at one minute intervals and head out to the first loop of stages, with the leaders leaving first.



Spectators are asked to park at NORTHIRON Church, next to the armory, and walk over. The Armory parking lot will be closed to non-competitor traffic.

NORTHIRON Church is located at:

[910 Palms Ave, Ishpeming](#)



CHARLIE DISCOE

SATURDAY SERVICE

The service park for Saturday will be at Aspen Ridge and Westwood High School in Ishpeming. Competitors will be in service at 1:40 on Saturday, after completing the first loop of morning stages. From there they will do a second loop with a quick refuel back at service before heading to Marquette for the final stage.

Spectators are welcome in the service park, but must pay attention to the flow of traffic. Spectators are also asked to park along Westwood Drive. Please be mindful of event traffic while parking and walking around, and understand it is a working area. Be aware of your surroundings at all times.

Westwood High School is located at:

[300 Westwood Dr, Ishpeming, MI 49849](https://www.google.com/maps/place/300+Westwood+Dr,+Ishpeming,+MI+49849)



SATURDAY SPECTATING



Double Trouble Spectator Area 4

[Two Mile Creek]

Stage 9 First car 10:50

Stage 12 First Car 2:32

Directions from the Ishpeming Armory

48 miles - approximately 70 minutes

Head west on Palms Ave / US 41 for 13.2 miles

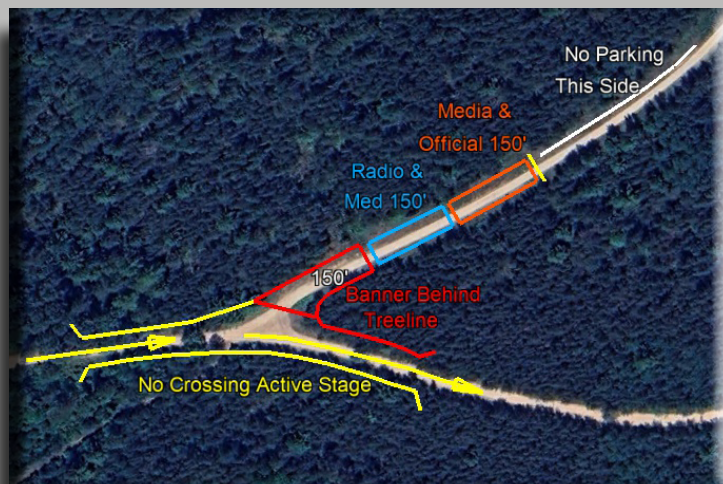
Turn left (South) on M-95 S, continue for 20.5 miles

Turn left (East) on Floodwood Rd, continue for 5.8 miles

Turn right (South) on Lake Oneil Rd, continue for 1.6 miles

Turn right (South) on Big Wheels Rd

Follow Big Wheels Road Rd for 6.1 miles to spectator area



Click image to view enlarged



SATURDAY SPECTATING



Ore Dock

Spectator Area 5

[Flat Rock]

Stage 10 First car 11:28

Stage 13 First Car 3:10

[Directions from the Ishpeming Armory](#)

41.6 Miles - approximately 54 minutes

Head west on Palms Ave / US 41 for 13.1 miles

Turn left (South) on M-95, continue for 20.5 miles

Turn left (East) onto Floodwood Rd

Follow Floodwood Rd for 8 miles to spectator area



Click image to view enlarged



**CRUSHIN' IT
SINCE 2012**



***Krist* Rewards**

**FUELING THE ADVENTURE.
SAVE ON **GAS.**
SCORE REWARDS.
CONQUER THE TRAIL.**



**YOUR NORTHWOODS
NEIGHBORHOOD STORE**



Visit **www.kristoil.com/rewards** to learn more!

SATURDAY SPECTATING



Krist Oil

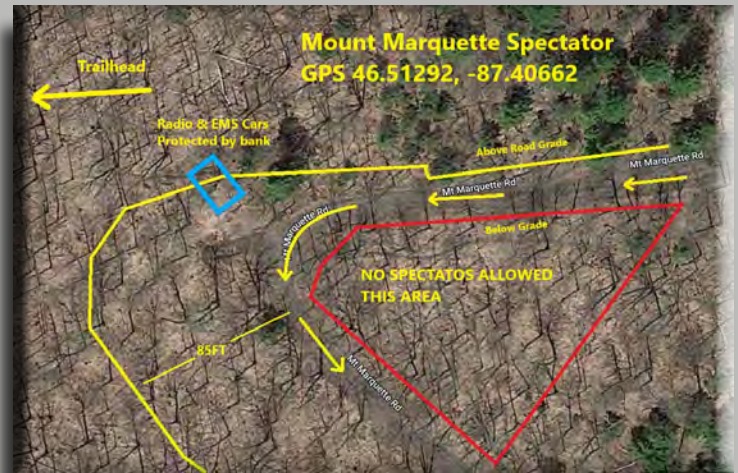
Spectator Area 6

[Mt Marquette]

Stage 15 First car 4:53

Directions to spectator area:

This location is only accessible by foot from the Noquemanon South Trails Trailhead, located at [2375 M-553, Marquette](#). From the lot there is a foot trail that leads to the spectator area.



Click image to view enlarged

The last stage of LSPR will be a “Yooper Special”... with teams going up and down Mt. Marquette, a stage that goes all the way back to the World Rally Championship days.

This stage will be run a bit different than the rest of the event, the Regional teams will all run first, followed by the National teams. The National teams will run in reverse order, with the car leading the event being the last car to finish the stage.

Following the finish of this stage there will be a podium ceremony for all classes, as well as a post race celebration downtown Marquette! The first regional car is expected to finish around 5:15, with the national teams about 30 minutes behind.



AIR FORCE POWER STAGE



U.S. AIR FORCE

At LSPR this year, the Regional teams will compete across 14 special stages, while the National teams will tackle 15. On the second loop of stage on Saturday, the Regional teams will only do a 2 stage loop before heading back to service for a quick refuel ahead of the Mt. Marquette stage, while the National teams will do a third stage in that loop, a second run through FF.

Teams can score additional championship points based on this stage alone, and many years the overall class winners can come down to a power stage win. The top five overall finishers earn between 1-5 points towards the overall championship, and the top finished in each class receives 3 points towards their class championship.



U.S. AIR FORCE

AIM HIGH



BENEFITS

The Air Force offers a full spectrum of benefits for Airmen and their families. From exciting opportunities to travel the world, to cutting edge training and education benefits, service in the Air Force is much more than wearing a uniform.

- Opportunities to serve part-time or full-time
- 30 days of vacation with pay each year
- Access world-class training programs in aviation, technology, and more
- Enjoy clear paths for promotions, leadership roles, and specialized training
- Use tuition assistance and the GI Bill for higher education
- Comprehensive health and dental benefits for you and your family
- Earn competitive compensation and bonuses for specialized career fields
- Live, work and travel around the world
- Generous retirement system with a Thrift Savings Plan similar to a 401(k) blended with a classic Pension.

CONTACT ME TODAY

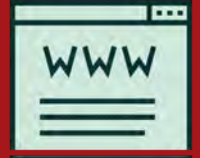
TSgt Megan Crosby
(906) 458-1595





CHARLIE DISCOE

**FOLLOW
US**



@LakeSuperiorPerformanceRally

The best way to keep in the know about what is happening with LSPR year round is to make sure to follow us across our social channels. Our website also has information about the event, volunteering, historical results, and more!



Take a great photo?

We are always looking for photos of our event for our website and to share on social media. On stage, off stage, competitors, volunteers, spectators, pets... we want to see them all!

If you are willing to share yours, scan the QR code to the right to upload them to us, or follow [this link](#).



AWARDS CEREMONY

RALLY FORWARD

LSPR Awards Party presented by Rally Forward

Once the competitors have completed the final stage, they will be heading to Downtown Marquette for the Podium Ceremony and post-race celebration.

In addition to the awards, the family friendly downtown celebration will feature entertainment, a big screen showing rally footage, sponsor demonstrations, vendors, and more!

Schedule:

- 4:00 - Open to the public
- 5:15 - Regional cars arrive Downtown*
- 5:50 - National cars arrive Downtown*
- 6:45 - Awards Ceremony Begins
- 10:00 - Celebration ends

This is the planned timeline, however there is always a chance we could be running behind due to delays over the course of the day on Saturday leading up to the finish.

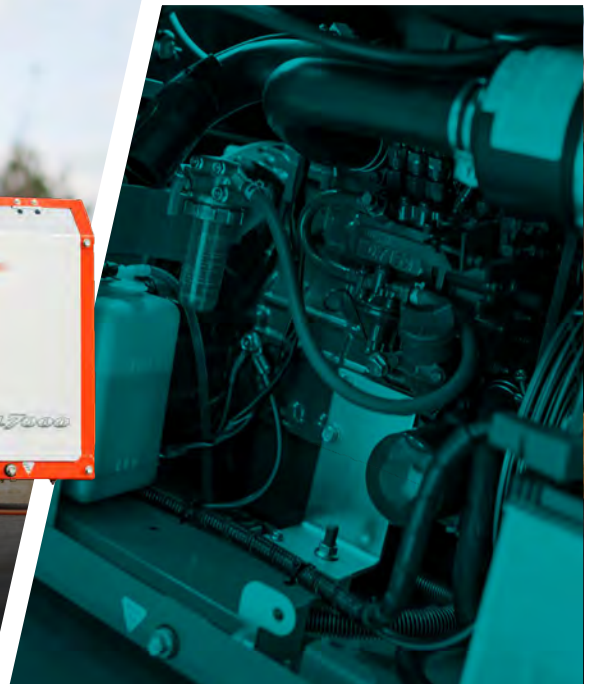
*Upon arrival cars will be held behind snow fencing for 30 minutes for inspection before being released, but can be viewed from behind the fencing



[Click image to view enlarged](#)



PROVEN PERFORMANCE. PLENTIFUL POWER.



KUBOTA LOWBOY GENERATORS

Kubota LOWBOY generators utilize efficient, emission-certified diesel engines to provide a powerful, compact design and environmentally friendly performance for a variety of tough applications. Simple one-side maintenance makes it easy to service your generator as needed so it is always ready to power up.

Find the generator you need at
kubotaengine.com/generators

Kubota



NATIONAL ENTRY LIST

	CLASS	#	DRIVER	CO-DRIVER	CAR MODEL
1	L4WD	199	TRAVIS PASTRANA	RHIANON GELSOMINO	SUBARU WRX ARA25L
2	RC2	21	CONNER MARTELL	ALEX GELSOMINO	2023 SKODA FABIA RS RALLY2
3	RC2	243	PATRICK GRUSZKA		2019 HYUNDAI I20
4	RC2	192	JAVIER OLIVARES	KJ MILLER	2021 FORD FIESTA RALLY2
5	L4WD	45	GRZEGORZ BUGAJ	ELIZABETH DZIUBANSKI	2011 SUBARU STII
6	O4WD	59	PATRICK MORO	OLE HOLTER	2025 CHEVROLET SONIC LT1
7	RC2	191	ALASTAIR SCULLY	STEFAN TRAJKOV	2019 HYUNDAI I20
8	O4WD	102	AREK BIALOBRZESKI	ARIS MANTOPOULOS	2021 CHEVROLET SONIC
9	L4WD	711	JOHN FARROW	MICHAEL FARROW	2022 FORD FIESTA RALLY3 EVO
10	O4WD	824	CAMERON STEELY	LEAH BRISETT	2016 FORD FOCUS RS
11	O2WD	25	SEAMUS BURKE	GARY MCELHINNEY	1977 FORD ESCORT
12	RC2	9	ROBERTO YGLESIAS	MICHAEL SZEWCZYK	2013 AUDI A1 MAXX RALLY
13	O2WD	612	MATTHEW NYKANEN	LARS ANDERSON	1998 BMW 328i
14	O2WD	107	RICHO HEALEY		2006 LEXUS IS350
15	L4WD	209	MADELYN TABOR	SOPHIA MCKEE	2021 FORD FIESTA
16	L2WD	305	SANTIAGO IGLESIAS	ROBERT KASSEL	2013 SUBARU BRZ
17	L4WD	441	ALGEN KAUMEHEIWA	PHILIP BARNES	2024 FORD FIESTA RALLY3
18	L2WD	210	HENRY TABOR	DYLAN HOOKER	2015 FORD FIESTA ST
19	L2WD	232	MARK TABOR	KATHRYN HANSEN	2018 FORD FIESTA ST
20	L2WD	91	RYAN MCGRATH		2007 LEXUS IS250
21	L2WD	407	NICHOLAS TIPPMMANN	DAVID TIPPMMANN	2019 FORD FIESTA ST
22	O2WD	289	STEVE ROWLANDS	COLE CLEMENTS	2001 BMW 330i

Entry lists as of 9/26/25, and subject to change

From everyone at ARA and the promoter team,
thank you for an amazing first year. We appreciate the
support from Organizers, Teams, Volunteers, Media and Fans.
Many exciting things yet to come in 2026 - stay tuned!

Lance, Preston & Marni



**AMERICAN RALLY
ASSOCIATION®**

OPERATED BY:
RALLY FORWARD

To our rally family - Thank you!

REGIONAL ENTRY LIST

	CLASS	#	DRIVER	CO-DRIVER	CAR MODEL
1	L4WD	887	JIMMY PELIZZARI	BRYCE PROSEUS	2002 SUBARU WRX
2	L4WD	534	SILAS HIMES		2008 SUBARU WRX STI
3	L4WD	69	GABE JACOBSON		2004 SUBARU IMPREZA WRX STI
4	NA4WD	752	DUSTIN PETERKE	ROBERT JUDGE	2000 SUBARU IMPREZA
5	O2WD	127	LEVI JOHNSON	GRIFFIN JOHNSON	1986 BMW 325
6	NA4WD	262	CAMDEN SHERIDAN	JEREMY FREY	1999 SUBARU IMPREZA
7	O2WD	16	MIKE HURST	RANDALL SHORT	1974 FORD CAPRI
8	NA4WD	797	RYAN PRYZBYLKOWSKI	BETSY NGUYEN	2001 SUBARU IMPREZA
9	NA4WD	119	TIM MICHEL		1996 AUDI A4 QUATTRO
10	NA4WD	625	AIDAN HICKS	JOHN HICKS	1996 SUBARU IMPREZA
11	NA4WD	676	SAM JACQUES	KYLE COOPER	2006 SUBARU IMPREZA
12	L4WD	897	JAMES RANDALL	ANDREW RAUSCH	2015 SUBARU WRX
13	NA4WD	518	ANDREW WILLIAMSON	JULIA STEWART	1993 SUBARU IMPREZA
14	L4WD	150	IVO DRAGANOV	VLADIMIR YANEV	2002 SUBARU WRX WAGON
15	O2WD	152	DOUG B SHEPHERD	CHRIS LABAERE	2003 DODGE NEON SRT-4
16	L4WD	432	TOM MAYER		2002 SUBARU WRX
17	L4WD	597	ROBERT DUPREE	JASON HACK	1991 MITSUBISHI ECLIPSE GSX
18	NA4WD	353	DAN SHIRLEY	STIRLING FAZIO	2005 SUBARU IMPREZA OBS
19	O4WD	530	NOLAN ABELL	MARIBEL PLAZA	2011 SUBARU STI
20	NA4WD	303	TRAVIS MATTONEN	ANIKKA NYKANEN	1996 SUBARU IMPREZA
21	L4WD	993	MIKE TIRPAK		1993 FORD ESCORT RS COSWORTH
22	L4WD	771	JAMES PRYZBYLKOWSKI	ETHAN CURTIS	2004 SUBARU WRX
23	NA4WD	535	CONNOR HIMES		2001 SUBARU IMPREZA
24	L2WD	986	CHRIS NONACK	SARA NONACK	2013 SUBARU BRZ
25	L2WD	201	ADAM VANDAMME	MORGAN ENGLE	1985 VOLKSWAGEN GOLF
26	O2WD	505	JOSH NYKANEN	CHARLOTTE HIMES	1987 VOLKSWAGEN GOLF GTI
27	NA4WD	322	IAN MCCARTY	HAILEY MCCARTY	2007 SUBARU 2.5RS
28	L4WD	839	KEVIN KAHL	CRAY DUMEAH	2017 SUBARU WRX
29	NA4WD	365	RICHARD DONOVAN	GREG DONOVAN	1997 SUBARU IMPREZA
30	NA4WD	817	MICHAEL MILLER	ANGELICA MILLER	1991 MITSUBISHI GALANT 6R4
31	L4WD	678	NICK BRAGG		1990 AUDI S2
32	L4WD	717	PETER FARROW	JACKSON SEDIVY	2002 SUBARU IMPREZA
33	NA4WD	309	ERIK BUETOW	JORDAN BUETOW	2008 SUBARU IMPREZA
34	NA4WD	686	JORDAN LOCHER		2000 SUBARU IMPREZA 2.5RS
35	NA4WD	211	JACK NELSON		2000 SUBARU IMPREZA
36	O2WD	596	SCOTT PARROTT	SHAWN SILEWSKI	1988 CHEVROLET S10
37	NA4WD	522	MATT JAMES	JACKIE JAMES	2006 SUBARU IMPREZA
38	NA4WD	213	BRYAN PEPP	TIMOTHY O'BRIEN	2000 SUBARU IMPREZA
39	O4WD	460	JOSHUA KEMP	DANIELLE KEMP	1994 SUBARU IMPREZA
40	L2WD	787	GABRIEL NIEVES	SAM DOD	2023 ACURA INTEGRA
41	O4WD	770	DOMINICK BROOKS	ERIC FRENTRESS	2001 SUBARU IMPREZA
42	L2WD	86	TEVFIK PEKER	JAMIE BELIVEAU	2019 FORD FIESTA
43	L4WD	701	JASON COOK		2004 SUBARU WRX
44	NA4WD	274	MARK LIETHA	BRAYDEN SAMIS	1993 SUBARU IMPREZA 2.5RS
45	O4WD	810	BRADLEY HAYOSH	NEIL MOSER	2018 SUBARU STI
46	O2WD	789	KYLE WILLIAMS	TYLER RAGSDALE	1997 FORD ASPIRE
47	NA4WD	276	JESSICA DAVIDS	BOYD SMITH	2009 SUBARU IMPREZA
48	L2WD	950	JASON KODAT	PHIL MARSH	2015 FORD FIESTA ST
49	O4WD	19	EVAN MOSLEY	BRANDON OPPERTHAUSER	2002 SUBARU WRX
50	L2WD	920	ERIK SCHULSTAD		2001 FORD FOCUS
51	L2WD	934	JASON HARNER	ZAK HARNER	2007 LEXUS IS350
52	O2WD	566	MATT HUUKI	ADELINN HUUKI	2009 NISSAN FRONTIER
53	NA4WD	899	JASON MESMAN		2006 SUBARU IMPREZA
54	O2WD	346	BRANDON BUSK	HELEN PARK	2002 BMW 325i
55	O2WD	158	RYAN LOVELAND	ELENA HUIZAR	1990 BMW 325i
56	L2WD	75	GRANT GIBSON	MILES GIBSON	2004 FORD FOCUS SVT
57	L2WD	168	DEREK THOMPSON	ELLIOTT SHERWOOD	1988 BMW 325is

ECONOMIC IMPACT

After LSPR 2024, we partnered with Travel Marquette and the Lake Superior Community Partnership, as well as the ARA, to conduct an economic impact study. Below are some of the key findings:

\$4.7 million total economic impact
\$1.65 million in lodging
\$469,000 in fuel
\$870,000 in food services
\$224,000 in drinking establishments
\$304,000 in retail shopping

Over 3,600 attendees with 75% coming from out of the area, as well as 335 volunteers, 450 competitors and crew, and 75 official media members.

45 new jobs generated across various sectors

Once again this year, ARA and LSPR are conducting an economic impact study. In order to get the most accurate data, input from everyone impacted by the event is appreciated. Spectators, Competitors, Volunteers, Media, as well as local business and residents are all encouraged to take the survey.

Please follow the QR code below to take the survey, or follow [this link](#).



JJ JIMMY JOHN'S

Discover more Deliciousness



Marquette

3228 US Highway 41 • 800 North Third Street

Order at jimmyjohns.com

TM & © 2025 Jimmy John's Franchisor SPV, LLC. 2025_5175800

★ U.S. ARMY

**★ ARMY
RESERVE**

EXPLORE MAINTENANCE CAREERS AT
GOARMY.COM



BE ALL YOU CAN BE

**US ARMY & ARMY RESERVE RECRUITING
MARQUETTE, MICHIGAN**



906-253-3077



usarmy.knox.usarec.list.5j4v@army.mil



535 County Rd HQ | Marquette, MI 49931



LSPR HISTORY

The roots of the Lake Superior Performance Rally date back to 1949, which was the first running of the infamous Press On Regardless (POR) TSD Rally. POR was a Time, Speed, Distance rally, where competitors work to finish in a precise time, not the fastest time. POR became a stage rally in 1969, and in 1973 and 1974 it was even a part of the World Rally Championship.

In 1994, the Press On Regardless reverted to running as a TSD rally, and so LSPR was born utilizing many of the POR roads. The rally has traditionally been the last round of the American Rally Association Championship Series in October, and as a result is known for its changing dynamic weather. Rain, sunshine, and even snow are all possible!

2024 NATIONAL TOP 10 LSPR FINISHERS

OVERALL	IN CLASS	CLASS	#	DRIVER	CODRIVER	CAR
1	1	O4WD	199	Travis Pastrana	Rhianon Gelsomino	Subaru WRX ARA24
2	2	O4WD	721	Conner Martell	Alex Gelsomino	2015 Subaru WRX STi
3	1	RC2	192	Javier Olivares	KJ Miller	2021 Ford Fiesta Rally2
4	1	O2WD	689	Ryan Booth	Nick Dobbs	1976 Ford Escort Mk2
5	1	L4WD	47	Tim Rooney	Claudia Barbera	2015 Subaru WRX STi
6	1	L2WD	41	Chris Sladek	Weston Davis	2023 Acura Integra
7	2	L2WD	107	Richo Healey	Michelle Miller	2006 Lexus IS250
8	2	O2WD	197	Daniel Hayes	Boyd Smith	2006 Ford Mustang GT
9	3	O4WD	59	Patrick Moro	Ole Holter	2021 Chevrolet Sonic
10	3	O2WD	29	Tim O'Neil	Mika Rajasalo	1969 AMC AMX

2024 REGIONAL TOP 10 LSPR FINISHERS

OVERALL	IN CLASS	CLASS	#	DRIVER	CODRIVER	CAR
1	1	L4WD	711	John Farrow	Michael Farrow	2002 Subaru Impreza WRX
2	2	L4WD	887	Jimmy Pelizzari	Kate Stevens	2002 Subaru WRX
3	1	O2WD	612	Matthew Nykanen	Lars Anderson	1998 BMW 328i
4	3	L4WD	534	Silas Himes	Aleutian Hatfield	2008 Subaru WRX STi
5	1	NA4WD	676	Sam Jacques	Kyle Cooper	2006 Subaru Impreza
6	2	NA4WD	409	Dylan Gonydyke	Zach Stewart	1998 Subaru Impreza
7	4	L4WD	897	James Randall	Andrew Rausch	2015 Subaru WRX
8	2	O2WD	16	Mike Hurst	Randall Short	1974 Ford Capri
9	3	NA4WD	625	Aidan Hicks	John Hicks	1996 Subaru Impreza
10	3	O2WD	127	Levi Johnson	Griffin Johnson	1986 BMW 325

THANK YOU

The LSPR team would like to thank the land agencies and road commissions that allow us to use the roads that we compete on! It takes a lot of cooperation between our team and them to assure that the stages are not only closed down for our use, in great shape before, during, and after the event. We appreciate the trust put in our team to be stewards of these roads.

United States Forest Service

Michigan DNR

Lyme Great Lakes Timberlands

JM Longyear

Marquette County Road Commission

Baraga County Road Commission

Houghton County Road Commission

Iron County Road Commission

Dickinson County Road Commission



LONGYEAR

**STORMY
KROMER**

MADE RIGHT HERE



**FREE FACTORY TOURS
MONDAY-FRIDAY**

RESERVE YOUR TOUR AT STORMYKROMER.COM/TOUR

Scan QR code for tour reservation form and more info.



SHOP OUR STORE

1238 WALL STREET • IRONWOOD, MI 49938
WWW.STORMYKROMER.COM • 888-455-2253



**Holiday Inn
Marquette**



FAST LOCAL PRINT



**PROUD SPONSOR OF
JACQUES/COOPER #676**

Follow the Firefly

FREE PRODUCTS YOUR 1ST THREE VISITS



LUME CANNABIS CO.



- ★ FREE COLLEGE
- ★ TRADE JOBS
- ★ PART TIME
- ★ SERVE LOCALLY
- ★ SIGN ON BONUS
- ★ JOIN AT 17 YEARS OLD



CONTACT

SSG JACOB HUTCHINSON:269-955-5020

EMAIL:JACOB.A.HUTCHINSON3.MIL@ARMY.MIL



EST. 1636



TRAVEL
MARQUETTE

FOX

MARQUETTE
SUBARU



krist

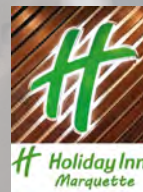


LONG YEAR



RALLY FORWARD

incrediblebankSM



2025 SPONSORS

ALEXANDER MODRYZYNSKI